

1201 Ortega @ 19th Ave.
street address

2115
block number

37
lot number

2
summary

S.F. CONSERVATORY OF MUSIC
building type/use/number of floors

landmark number

RELATIONSHIP WITH SURROUNDING BUILDINGS

Relationship of setting to building -2 -1 0 1 2 3 4 5

Importance as contribution to a cluster/streetscape -2 -1 0 1 2 3 4 5

ARCHITECTURAL DESIGN VALUATION

Facade proportions -2 -1 0 1 2 3 4 5

Richness/Excellence of detailing/decoration -2 -1 0 1 2 3 4 5

Unique visual feature of interest 0 1 2 3 4 5 *TOWER*

Example of a rare or unusual style or design 0 1 2 3 4 5

Overall architectural quality -2 -1 0 1 2 3 4 5

PROPOSED FOR FURTHER INVESTIGATION

CORNICE, PARAPET, APPENDAGE

Importance of cornice to building design -2 -1 0 1 2 3 4 5

Cornice contribution to streetscape -2 -1 0 1 2 3 4 5

FACADE CONDITION

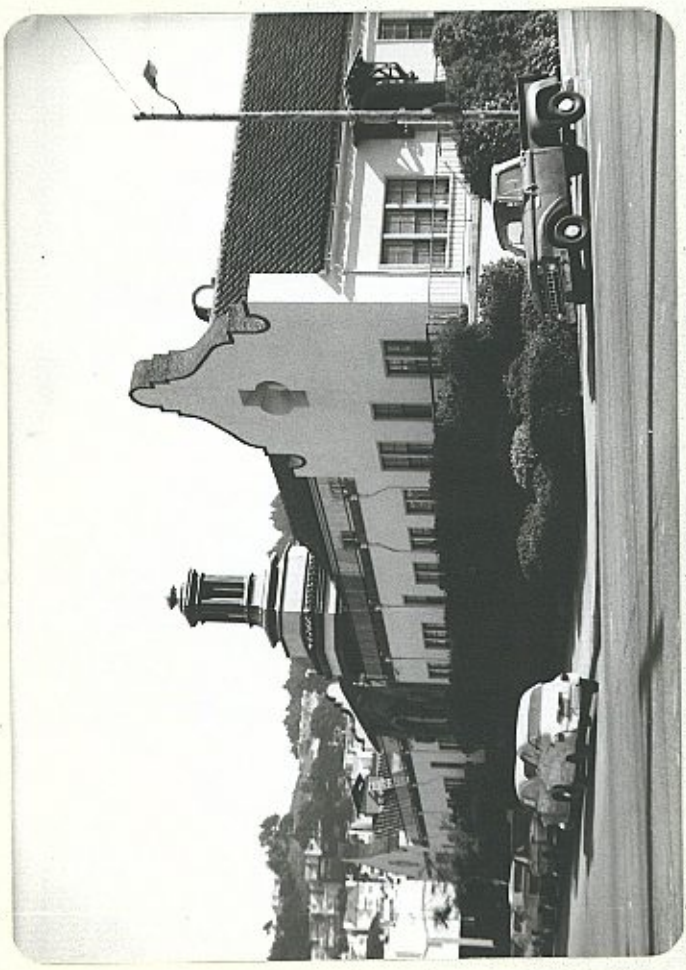
Physical condition -2 -1 0 1 2 3 4 5

Paint/Material color -2 -1 0 1 2 3 4 5

REMODELING

Appropriateness of improvements -2 -1 0 1 2 3 4 5

JAN 27 -76 RH
date



Field Notes

TOWER PROVIDES MINI-FOCAL POINT FOR BLAND AREA OF THE SUNSET

Also has a ^{AVIATION} passable annex along 19th Avenue

BUILT AS 'INFANT SHELTER'

Archit. - Louis Christian Murgatell

Review Notes See ACE AUG 28, p. 106

Junior League Listing

text index file

Northern California Guide

Other Listing _____

FLEMISH BAROQUE
a variant of Mission Revival

photo 166-36

A2